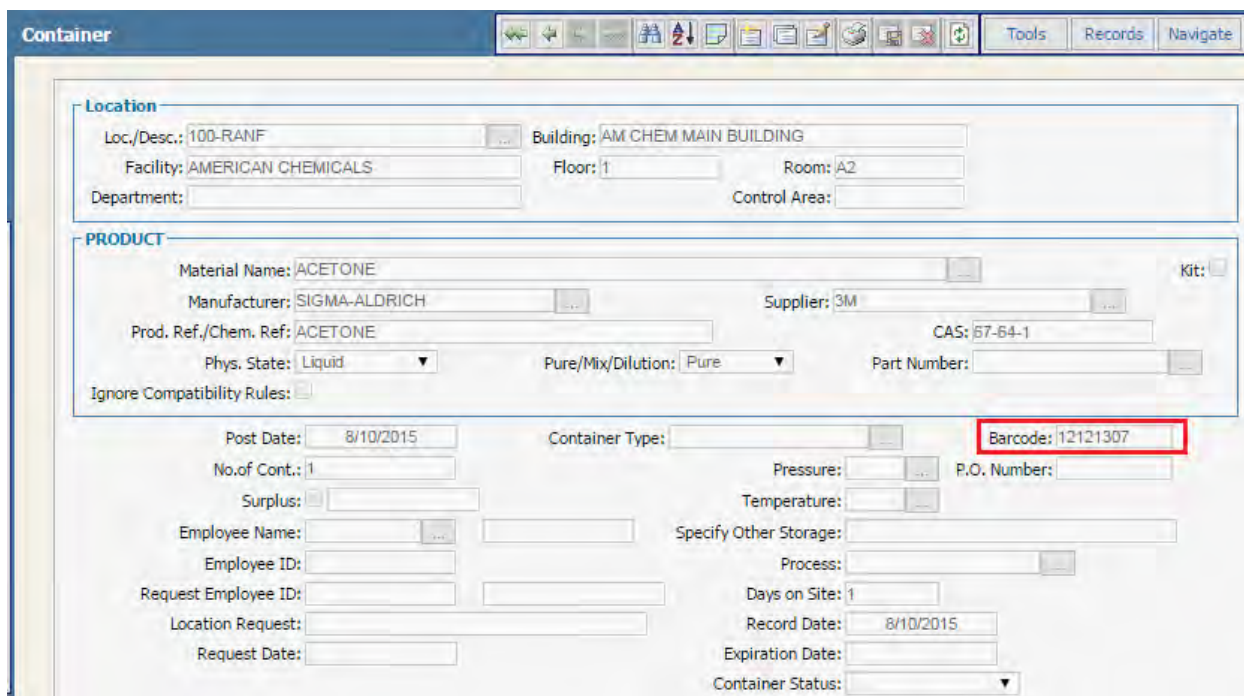


THE USAGE OF BARCODES IN EMS

1. Inventory module supports the use of barcodes.

In Container form there is a field which indicates the barcode of the specific container.



Container

Tools Records Navigate

Location

Loc./Desc.: 100-RANF Building: AM CHEM MAIN BUILDING
 Facility: AMERICAN CHEMICALS Floor: 1 Room: A2
 Department: Control Area:

PRODUCT

Material Name: ACETONE Kit:
 Manufacturer: SIGMA-ALDRICH Supplier: 3M
 Prod. Ref./Chem. Ref: ACETONE CAS: 67-64-1
 Phys. State: Liquid Pure/Mix/Dilution: Pure Part Number:
 Ignore Compatibility Rules:

Post Date: 8/10/2015 Container Type: Barcode: 12121307
 No. of Cont.: 1 Pressure: P.O. Number:
 Surplus: Temperature:
 Employee Name: Specify Other Storage:
 Employee ID: Process:
 Request Employee ID: Days on Site: 1
 Location Request: Record Date: 8/10/2015
 Request Date: Expiration Date:
 Container Status:

Select ACTIONS > LABELS > STORAGE/ SHIPPING LABELS to print the label for your container.



Location and Employee may also have a barcode.

Go to Location form and print a storage/shipping label. In the following image you can view the

barcode of the location.

**IF YOU ARE USING UP THIS CONTAINER,
SCAN THIS CODE AS THE LOCATION:**

**OR: IF YOU ARE TAKING THIS CONTAINER WITH YOU, SCAN YOUR LOCATION CODE FROM THE
LIST BELOW**

Building: AM CHEM MAIN BUILDING

Location Barcode: 20478



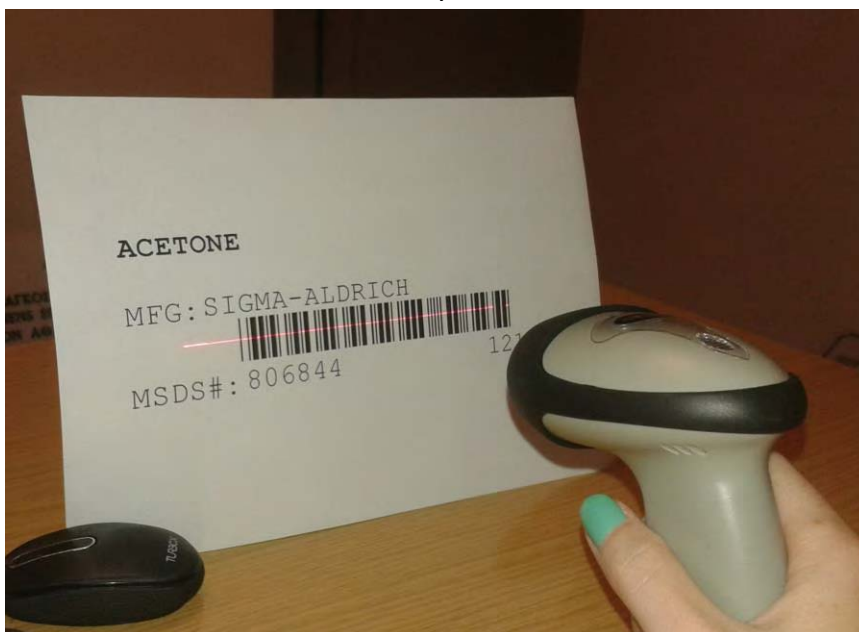
Room# Location:

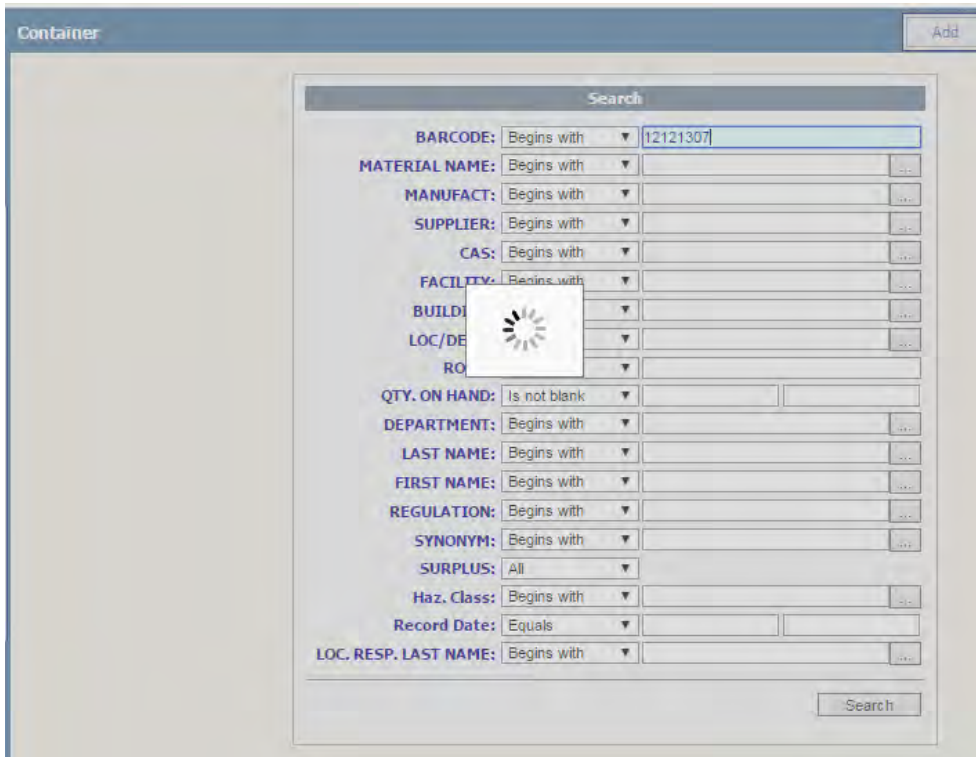
A2 100-RANF

SEARCH WITH THE AID OF THE BARCODE SCANNER

- You can search for a container by scanning the barcode and the information will be populated in the Search screen.

Note: Remember to choose with your mouse the barcode field before scanning.





- You can also scan the barcode of the Container, Location or Employee to search for a container from your IPAD (Inventory application).



2. Open the Container Distribution form (Inventory > Pharmacy Chemical Request and Distribution).

You can search a chemical for your request by filling in the barcode or by scanning it with the barcode scanner. You can perform the same Action for the fields: Employee No. and Location ID.

3. Barcode field is further used in **Waste module**.

- Disposal requests are facilitated by using the barcode of the chemicals. Open the *Request Item* form (Waste > Waste Disposal Services > Waste Generator > Add Items for pick up).

You can enter or scan the barcode of the chemical and the system will populate the

information.

Request Item

Request Employee

Last Name: First Name: Employee #:
Email address: Phone:

Item ID:

Request Item

Barcode:
Chem Name:

Profile:
Location:
Drum:
Accum. Area:

Request Date:
Pickup Date:
CAS #:
Facility:
Building:

Container

of Cont: Size: Units: Type:

Contents

Quantity: Units: Lbs/Gal: Lbs:

Radioactive

Radioactive: Mixed: RUA: Isotope:
Activity: Unit:

Perform the same action from your IPAD (Waste application)

Φορέας 10:55 π.μ.

Clear form Please set th... Saved data

WASTE DATA

Item ID

please enter or scan the item id

Profile

please enter or select the profile code

Quantity

please enter the item quantity

Unit

please select the unit

Save

Transfer Request Create Manifest More

- From Container form you can dispose the record (Actions > dispose/consume) and create a new waste item. The Waste Item form has a barcode field likewise.

Waste Item

ITEM ID: 16834 Manifest: Drum ID: ?
 Facility: Accum Area:
 Location:
 Employee:
 Barcode: 12121307
 Chem Name: ACETONE CAS #: 67-64-1
 Profile: Compatibility: MXM
 Request#: Request Date: Request Employee:
 Pickup Date: Pickup Employee:

Container
 # of Cont: Size: Units: P POUNDS Type:
 Weight (lbs):

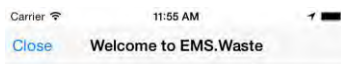
Contents
 Quantity: P POUNDS Lbs/Gal: 8.34 Lbs: 0
 Process Generating Waste: Process Type:

Radioactive
 Radioactive: Mixed: RUA: Isotope:
 Activity: Unit:

EPA Codes: Accum.Start: 8/10/2015 Sample:
 State Codes: Accum.End: Handler:
 Physical State: LIQUID Account:
 Hazard Class: 3 Classification:

- Barcode scanning is applicable in IPAD (Waste app) when you try to perform actions like transfer.

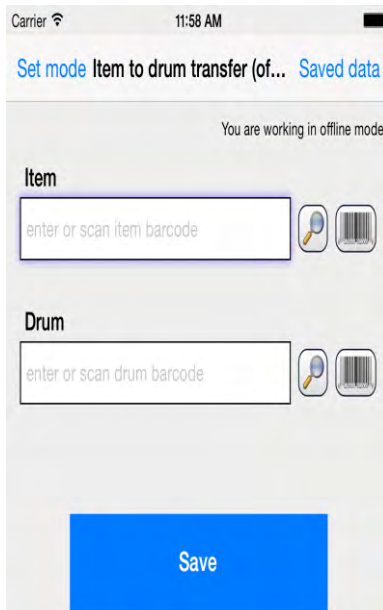
Transfer Item to Drum:



The transfer screen



Use the transfer screen to perform waste item and waste drum transfers



Transfer Drum to another Drum:



- You can perform Drum actions from your IPAD by scanning either the barcode of the **drum** or the barcode of the **location**





- If you wish to Transfer a Drum to Manifest from the IPAD (waste app) just scan the barcode of the Drum and then select the Manifest and click ok save.

Carrier 11:54 AM

[Clear form](#) **Drum manifest (online)** [Saved data](#)


You are working in online mode

Drum


 

Weight (in pounds)

Bay



Manifest



Q W E R T Y U I O P
A S D F G H J K L
↑ Z X C V B N M ↵
123 😊 space Next

